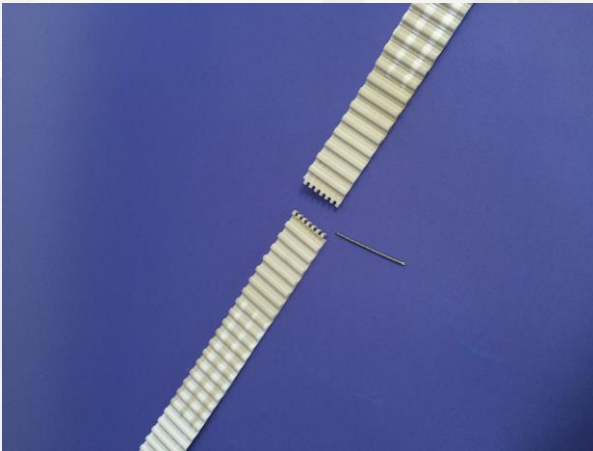


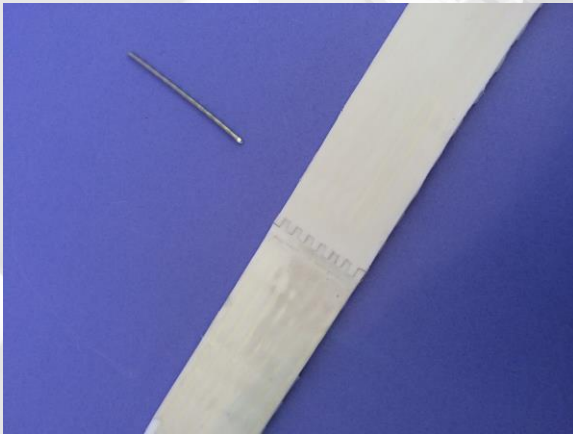
Assembly Instructions for easy joint

easy joint

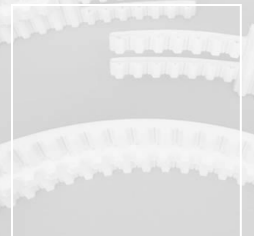
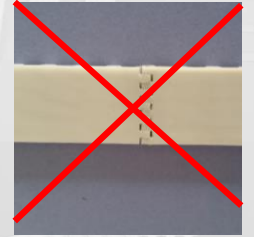


T10 – AT10 - AT20 – H – 8M version

1



Align the teeth. Teeth must be correctly aligned to avoid any cables damage during pin threading. Misalignment of teeth or the using of a non-chamfered pin can damage the belts cables during the installation



**Cables are in contact with the pin ; be careful to prevent any cables damages during the installation
Check to correctly encase the joint's teeth.**

2

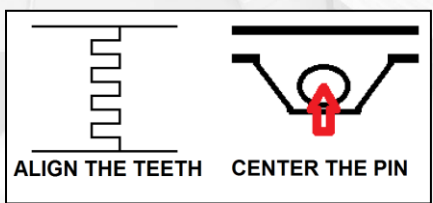
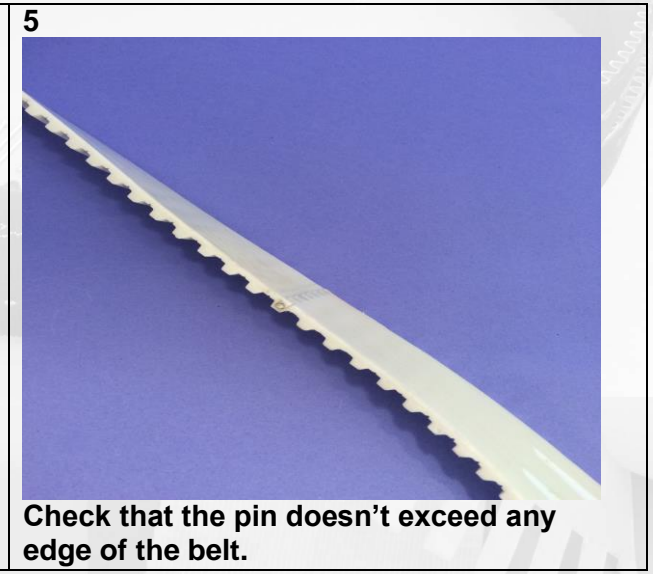
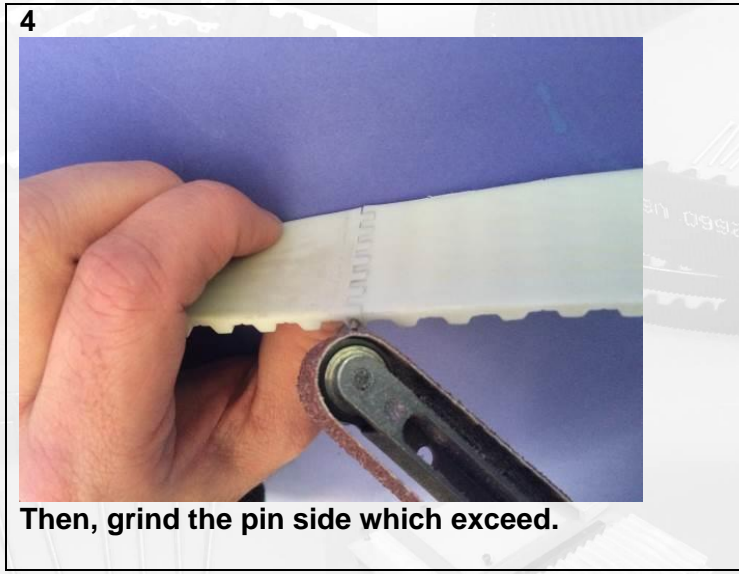


Begin to thread the pin by using an electric screwdriver and water (using as lubricant), to help the threading. For a correct alignment, use the plate/piece of belt furnished, like photo.

3



Cut the pin the nearest of the edge of the belt.



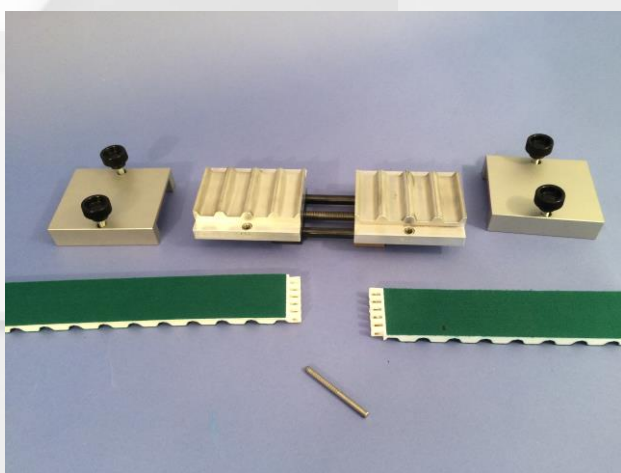
Respect the indications on the belt:

ALIGN THE TEETH – CENTER THE PIN

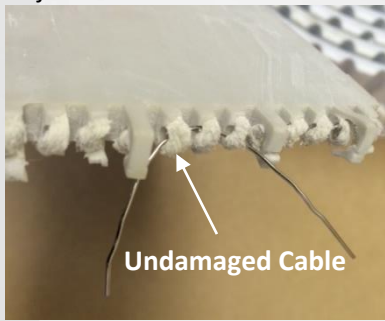
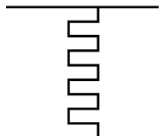

Make the mounting easier:

If your machine doesn't have a tensioning system, ask for *the tensioning tool* for easy joint belts.

Possibility to mount the belt in 2 times, pins with head mounted in front of each other (locking pins);
Contact us for more information!



Troubleshooting Guide

Problem	Possible cause	Solution
Joint breaking	Too high tensioning	Reduce the tension
	Incident or usury	
	Bad pin insertion / Misalignment of joints teeth 	<p>The photo shows a case where pin was not correctly inserted (cables are not damaged). Possible cause is a misalignment of the joint teeth.</p> <p>Read carefully the mounting documentation, and follow the instruction :</p> <div style="display: flex; justify-content: space-around; align-items: center;"> <div style="text-align: center;">  ALIGN THE TEETH </div> <div style="text-align: center;">  CENTER THE PIN </div> </div>
Hard pin insertion	Absence of lubricant	Use water to help the insertion
	Misalignment of joints teeth	Align correctly the joints teeth
	No use of a chamfered pin	Use a chamfered pin, or ask for it